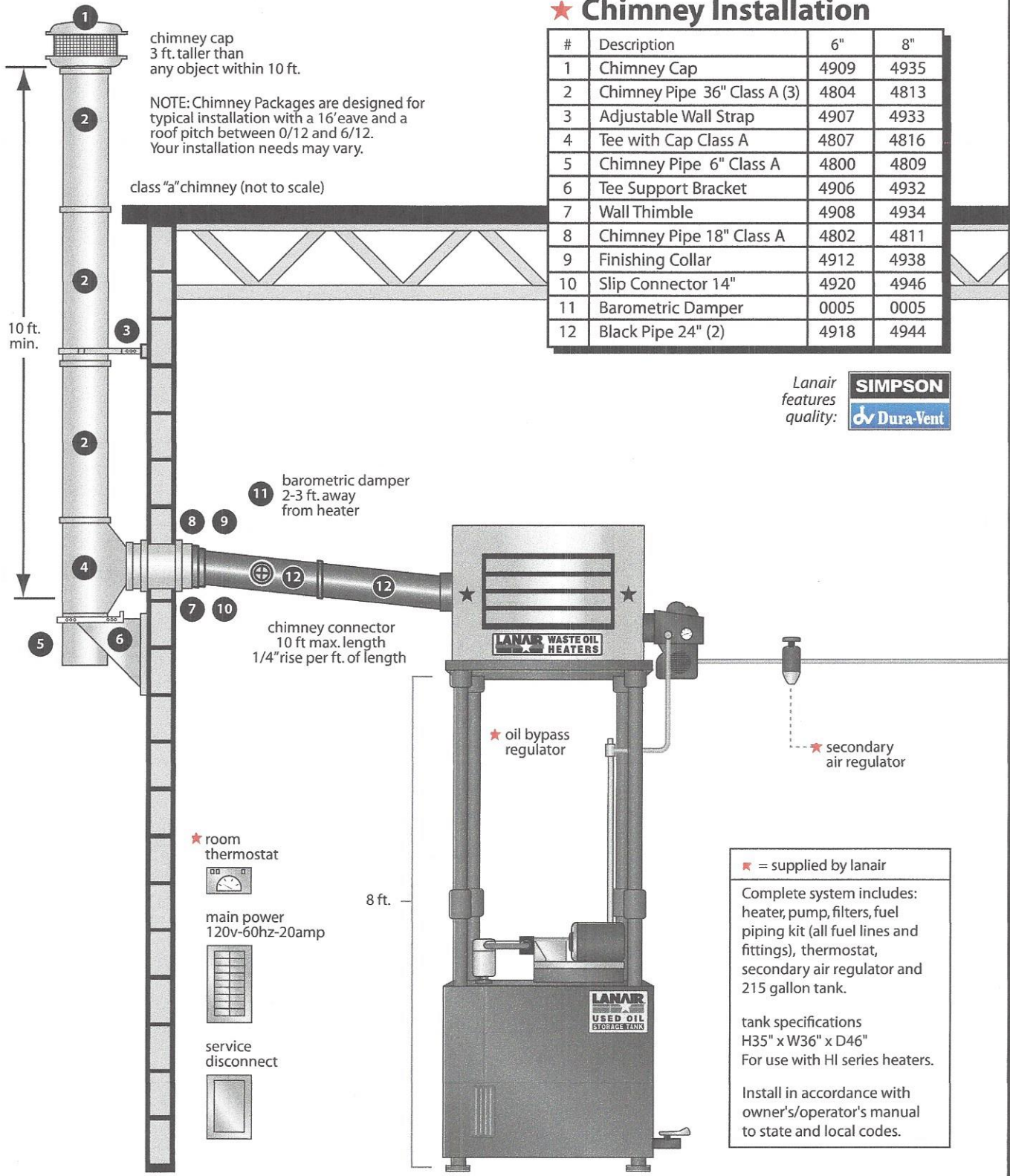


★ Chimney Installation

#	Description	6"	8"
1	Chimney Cap	4909	4935
2	Chimney Pipe 36" Class A (3)	4804	4813
3	Adjustable Wall Strap	4907	4933
4	Tee with Cap Class A	4807	4816
5	Chimney Pipe 6" Class A	4800	4809
6	Tee Support Bracket	4906	4932
7	Wall Thimble	4908	4934
8	Chimney Pipe 18" Class A	4802	4811
9	Finishing Collar	4912	4938
10	Slip Connector 14"	4920	4946
11	Barometric Damper	0005	0005
12	Black Pipe 24" (2)	4918	4944

Lanair features quality: **SIMPSON** **Dura-Vent**



*** NOT FOR RESIDENTIAL USE**

LANAIR® waste oil-fired HEATERS

MX-300 TECHNICAL SPECIFICATIONS



MIX-300

Includes: heater, secondary air regulator, oil by-pass regulator, pump assembly, primary waste oil strainer, check valve, barometric damper, oil supply strainer and thermostat.

FEATURES:

- UL Listed
- 300,000 BTU
- Fine grain galvanized (rust-resistant) cabinet
- MX Series High-Performance Burner
- Internal fan to reduce excess noise
- Adjustable, locking louvers
- Top exhaust

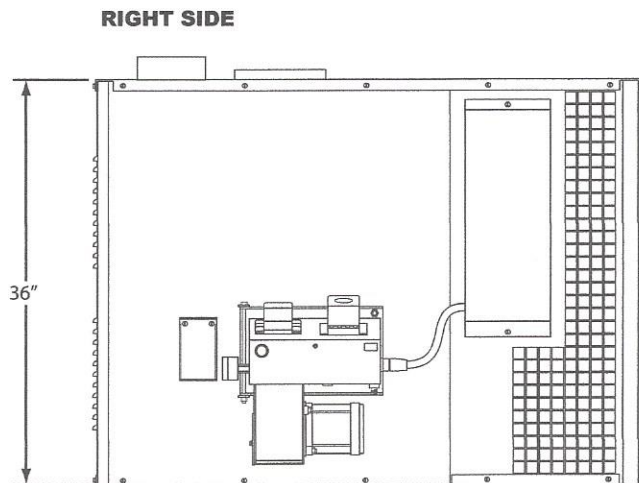
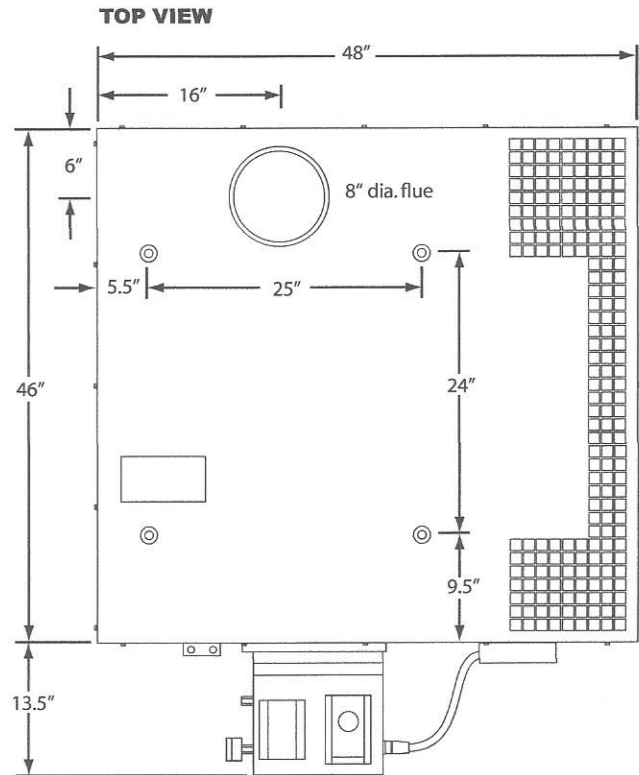
Heat Range (btuh)*	to 300,000
Fuel Input (gph)	2.14
Heating Area (sq. ft.)**	to 10,000
Power Supply (AC)	120V. 60HZ
Cabinet Dimensions (H x W x D)	36" x 46" x 48"
Hanging Weight (lbs.)	630
Axial fan (cfm)	4,600
Chimney Pipe***	8" Class "A"
Compressed Air****	2 CFM - 15 PSI
Combustion Chamber	10 GA CRS
Chimney Location	Top Side
Warranty (Parts/Chamber)	1 year / 10 year

* BTUH value varies with fuel type

** The suggested heating area is based on buildings with minimal heat loss due to open doors, construction, materials, windows, insulation, etc...

*** Chimney package is optional

**** Customer supplied. Source must be capable of producing 2.0 CFM @ 60 PSI.



*** NOT FOR RESIDENTIAL USE**